



Precision rolled to assure accuracy in all its applications.

Shim Stock is available for 0.0005" to 0.032" thick.

Standard widths are 6" or 12"

Shim stock can be easily stamped, bored, cut, milled, sheared or drilled to suit any application.

Available in Stainless Steel, Brass, Aluminum & AISI 1010 Steel.

861 Cranberry Court  
Oakville, ON L6L 6J7

Phone: (905) 847-6500  
Fax: (905) 847-6943  
email: [sales@daemarinc.com](mailto:sales@daemarinc.com)

## DMR STAINLESS STEEL SHIM - 300 series



DMR™ Stainless Steel Shim can be used in any application where corrosion is a concern. Our stainless shim is available in thickness from .0005" to .031" and in standard packages 6" X 50" or 12" X 50".

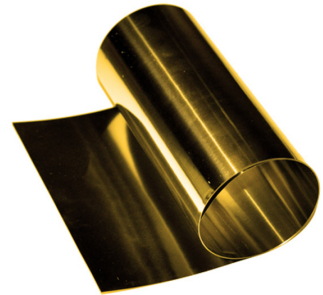
DMR Stainless Steel Shim is 300 series, has a Rockwell Hardness of C40-45 and meets the following specifications: MIL-S 5059, QQS766 and QQS763.

## DMR BRASS SHIM

DMR™ Brass Shim Stock is used where some stiffness is required and where corrosion problems exist. It has been cold rolled to a 1/2 hard temper with a tensile strength of approx. 62,000 PSI. Brass Shim Stock is 70% Copper & 30% Zinc. It has a Rockwell hardness of 30T 56/68.

Shim is available in thickness from .001"-.031" in standard packages of 6" X 100" & 12" X 120".

Brass Shim Stock meets the following specifications: SAE-CA 260, ASTM-B-36, AMS-4507 & QQB-613-#2.



## DMR STEEL SHIM

DMR™ Steel Shim is low carbon mild steel cold rolled to a #1 hard temper.

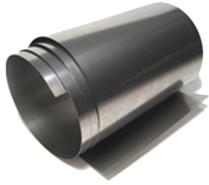
It is stiff and springy, and can be used where hardness is required. The material can be punched or sheared with minimum burring and distortion. Available in .001" to .031" and in standard packages 6" X 100" or 12" X 120".

Steel Shim Stock meets the following specifications: AISI 1010 & QQS 698.



Essential components for industry  
[www.daemar.com](http://www.daemar.com)



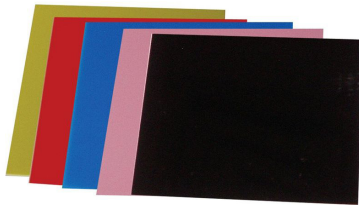


## **DMR NICKEL SHIM**

DMR™ Nickel Shim Stock is a 200 grade annealed material. It meets the following specifications: ASTM-B-160, B161, B162, B163 & B366. Nickel shim is available in thickness from .001" to .010" and in standard packages of 6" X 50". Special slit widths are also available on request. Typical weight: .010" X 6" X 50' = .48 lbs.

## **DMR ALUMINUM SHIM**

DMR™ Aluminum Shim Stock is a type 1100, which has a minimum aluminum content of 99%. Its temper is H-18, full hard. The material is strengthened by cold working and is not heat-treatable. Aluminum shim stock has excellent corrosion resistance and high thermal and electrical conductivity.



## **DMR PLASTIC SHIM**

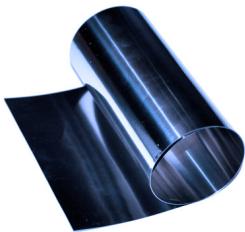
DMR™ Plastic Shim Stock is colour coded for your convenience. It is used where corrosion is a problem. 20pc. Per package. Special slit widths upon request.

## **DMR BLUE TEMPERED SHIM**

DMR™ Blue Tempered Shim Stock is 1095 high carbon spring steel. It has a Rockwell hardness of C 48/51. Blue Tempered Spring Steel is polished and blued. Special slit widths upon request.

## **DMR ANNEALED STEEL SHIM**

DMR™ Annealed Steel is 1075 high-Carbon steel, which is heat treatable. Annealed Steel is a spheroidized annealed temper. It is the only shim that can be formed in its annealed condition, and then heat-treated to a hard (spring) temper. Special slit widths upon request.



## **DMR COPPER SHIM**

DMR™ Copper Shim Stock is a 110 alloy material in the annealed (soft) condition. Special slit widths upon request.